



# Childress Bridge Replacement Frequently Asked Questions



## 1) How old is the bridge?

The Childress Drive Bridge over South Utoy Creek is approximately 80 years old and was constructed in 1938.

## 2) Why is it being replaced?

The bridge is being replaced to improve safety for all users. The bridge has undergone significant deterioration (see photos). Even though there have been efforts to extend the life through routine inspection and periodic maintenance, the bridge has neared the end of its life expectancy. Currently the bridge is closed due to safety concerns.

## 3) What are the limits of the project?

The construction limits are from Key Drive to approximately 250 feet north of the existing bridge.

## 4) What is the schedule for construction (Timeline)?

The estimated construction for the Childress Bridge will take place from Summer of 2018 through Summer of 2019.

## 5) When will the bridge be removed?

Utility work is expected to take place this Summer. The bridge is estimated to be removed in the Fall of 2018.

## 6) When was the street closed to traffic and pedestrians?

All streets are open to local traffic, except the bridge, which has been closed since March of 2018. It will reopen in Summer of 2019.

## 7) When will the street be open for traffic and pedestrians?

It is estimated that the bridge will open for traffic and pedestrians in Summer 2019.

## 8) What is the planned detour for motor vehicles?

Please see the attached Construction Detour map.



## 9) What if I live on a street near the limits of construction?

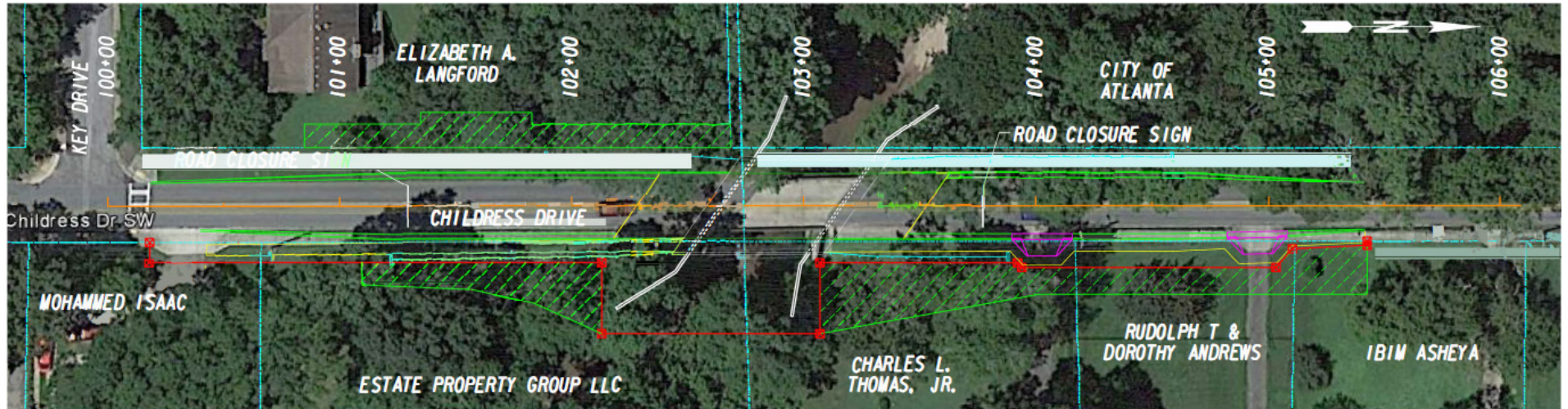
Access to local traffic will be maintained.

## 10) What is the planned detour for pedestrians?

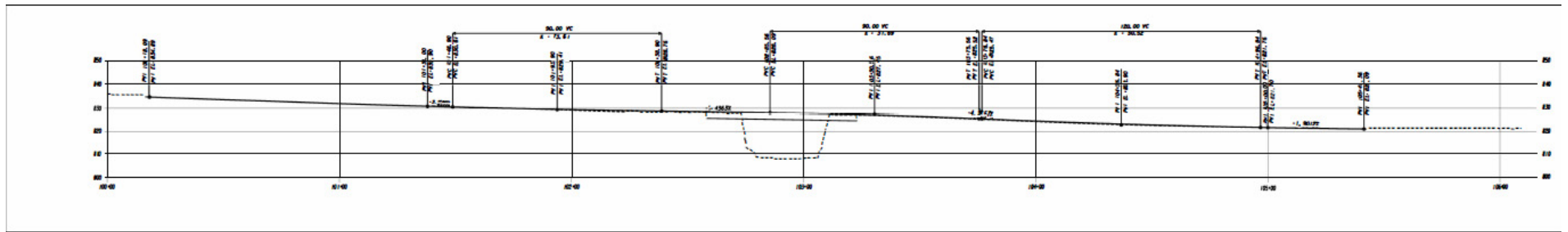
Pedestrians will not be able to use the bridge when it is closed.

## 11) How do I receive construction updates for this project?

Updates will be posted on the Renew Atlanta Bond website [www.RenewAtlantaBond.com](http://www.RenewAtlantaBond.com) or on Twitter #RenewATL2015.



- TEMPORARY EASEMENT FOR CONSTRUCTION
- PERMANENT RIGHT-OF-WAY
- EXISTING RIGHT-OF-WAY



*Plan and Profile presented during the Public Meeting*