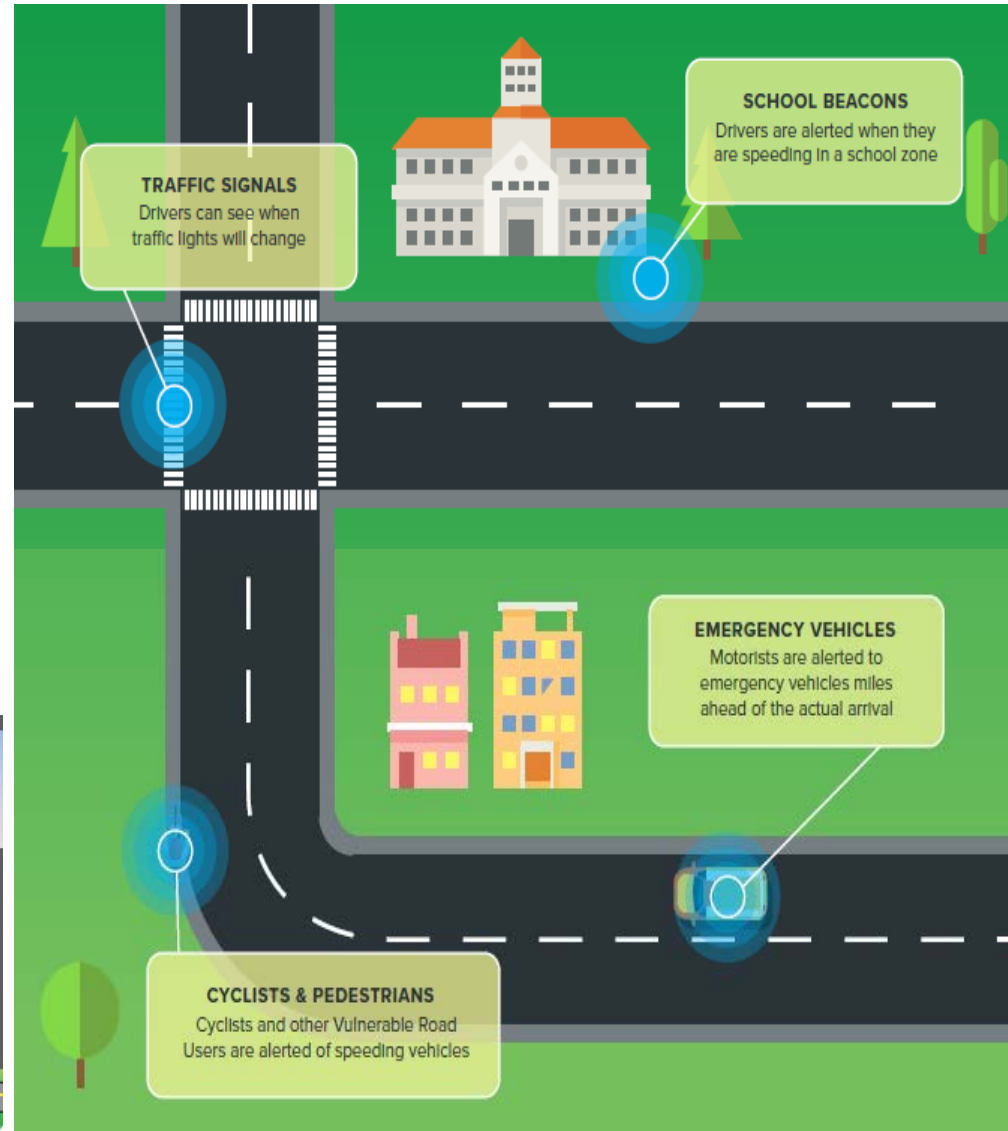
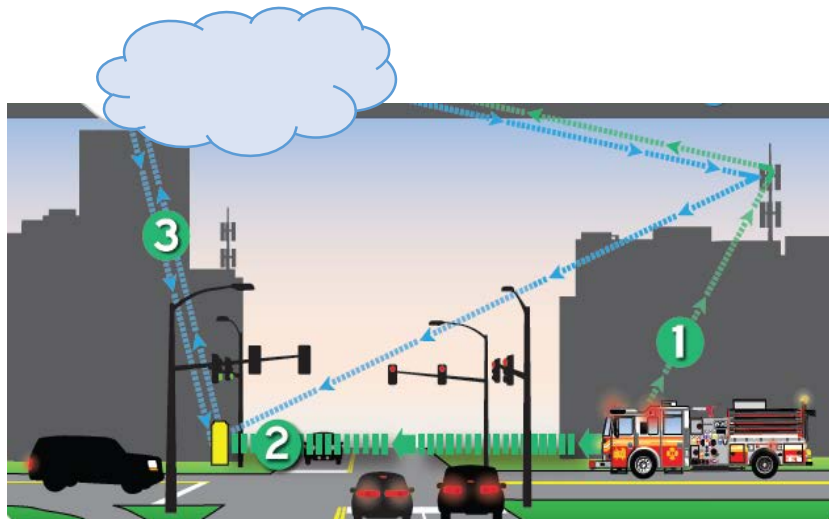
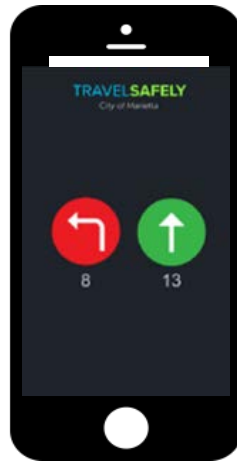




Dekalb Avenue: "Everything Connected to Everything" through an APP

- ▶ Emergency vehicle preemption, signals change to green for faster response times
- ▶ Infrastructure connected to vehicles/phone
- ▶ Travel Safety App:
TravelSafelyApp.com





What does the TravelSafely App Do?



Get Ready for Green

At a red light, the app will display a countdown and verbally notify you when the light is about to turn green.



Red Light Warning

The app will notify you if it appears that you're about to run a red light.



School Zone Warning

The app will notify you if you're speeding in an active school zone.



Cyclist Ahead Warning

If you're a motorist, the app will warn you if there's a cyclist on the road ahead.



Work Zone Warning

The app will notify you if you're speeding in an active work zone, and show you the speed limit.



Curve Warning

The app will warn you if you are traveling too fast with dangerous curves approaching.



Slow Speed Zone Warning

The app will warn you if you're traveling too fast in an area of increased accidents.



Rear-end Collision Warning

The app notifies you if it appears that you're about to have a rear-end collision.



Pedestrian Ahead Warning

If you're a motorist, the app will warn you of pedestrians in the crosswalk ahead if it detects you aren't going to stop.



Emergency Vehicle Warning

The app notifies motorists and cyclists if an emergency vehicle is approaching, and from what direction.



Vehicle Approaching Crosswalk

If you're a pedestrian, the app will tell you if a speeding car is approaching while you're in a crosswalk.



Vehicle Approaching Cyclist

The app will tell cyclists if a speeding car will pass close by.

TravelSafelyApp.com